

# DEPORTED DEBOBBLED

*VOL. 4 PRESENTED BY EMOJI GIRL*



*... THE SITE FORMS A SERIES OF BAYS AND HEADLANDS AROUND WHICH THE BUILDING FORM TWISTS AND TURNS ...*

*CONCEPTUAL MASSING MODEL  
SHOWING A LACK OF MASS.*

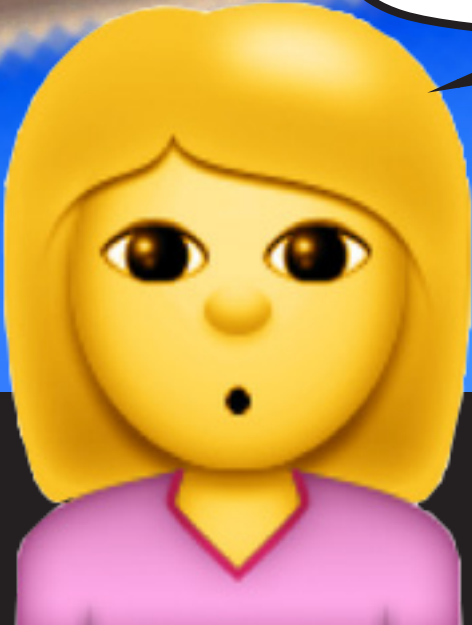






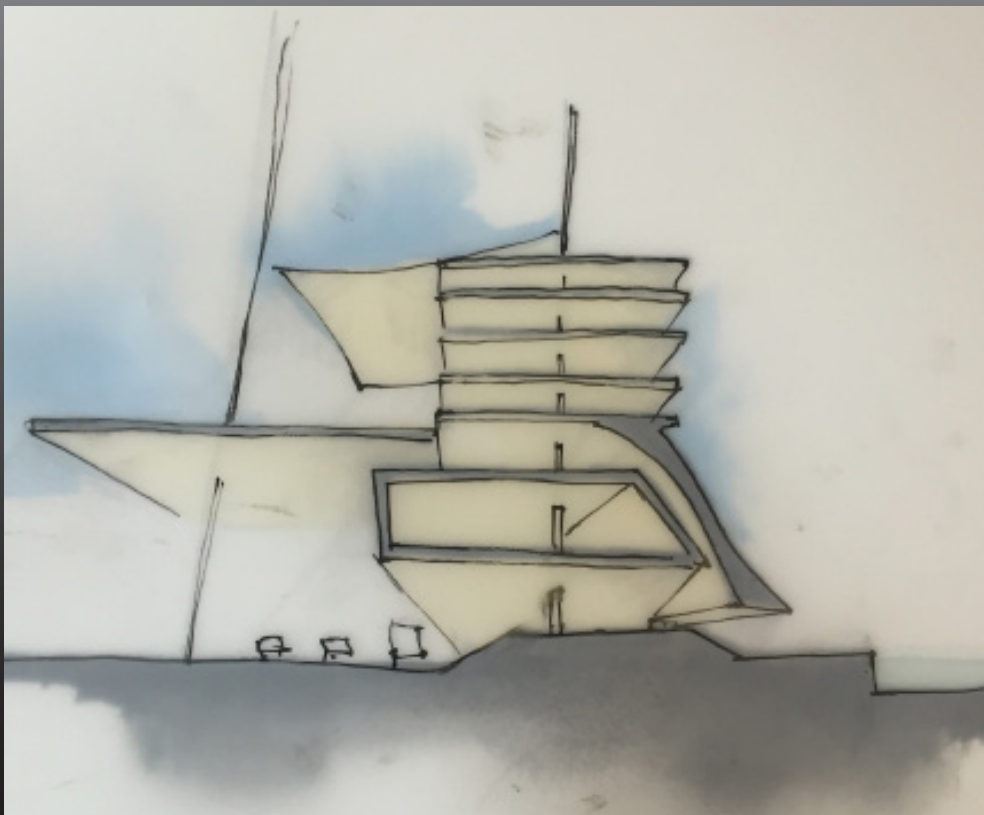
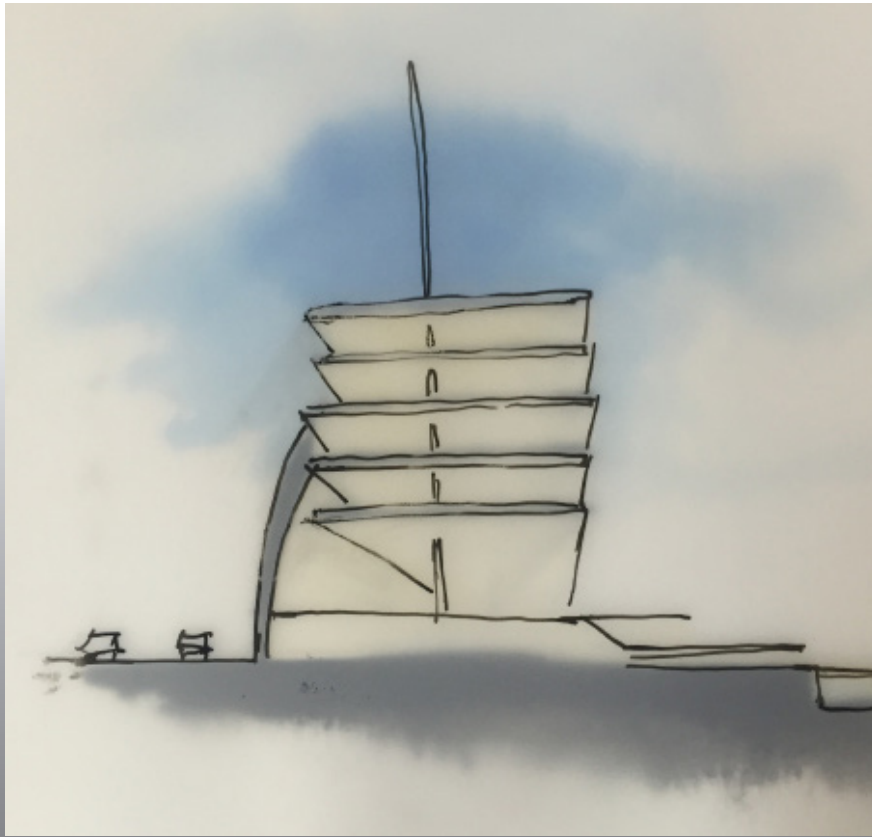


*GRATIFYING AND INSTANTANEOUS IMAGES REFLECT THE WAY WE CONSUME POPULAR MEDIA AND ARCHITECTURE*





*... INITIAL PROPOSAL FOR THE ROAD FOLLOWING THE CURVES OF THE BUILDING IN AN ATTEMPT TO SLOW TRAFFIC ALONG QUAY STREET.*

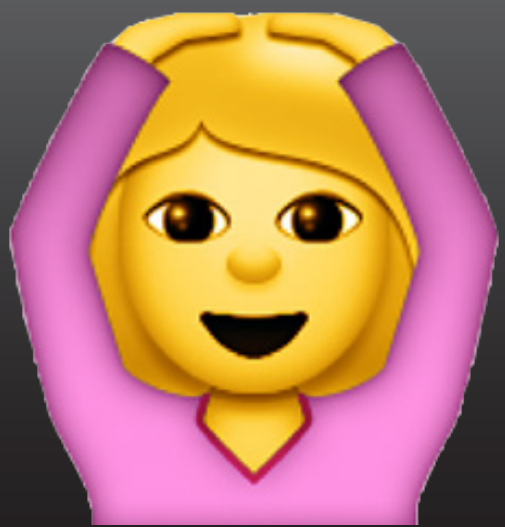


*... CONCEPTUAL SECTIONS ABSTRACTED FROM THE MODEL REVEAL THE ISSUES SURROUNDING SCALE AND INFRASTRUCTURE, AND THE EFFECT ON LAND ADJACENT TO THE SITE ...*



*... USING THE METAPHOR OF THE ROPE AS THE THREADS THAT WEAVE PEOPLE TOGETHER, THIS CONCEPTUAL MODEL EXPLORES THE EFFECT OF EXAGGERATING THE CURVES AND THE SPACES AND HOLLOWES FORMED IN PLAN ...*







*... ITERATIVE MODELS EXPLORE THE ARCHITECTONIC PROPERTIES OF THE ROPE ANALOGY, WHERE THREADS BECOME ELEMENTS OF STRUCTURE THAT LASH THE BUILDING TOGETHER ...*



**Cross  
section**

